

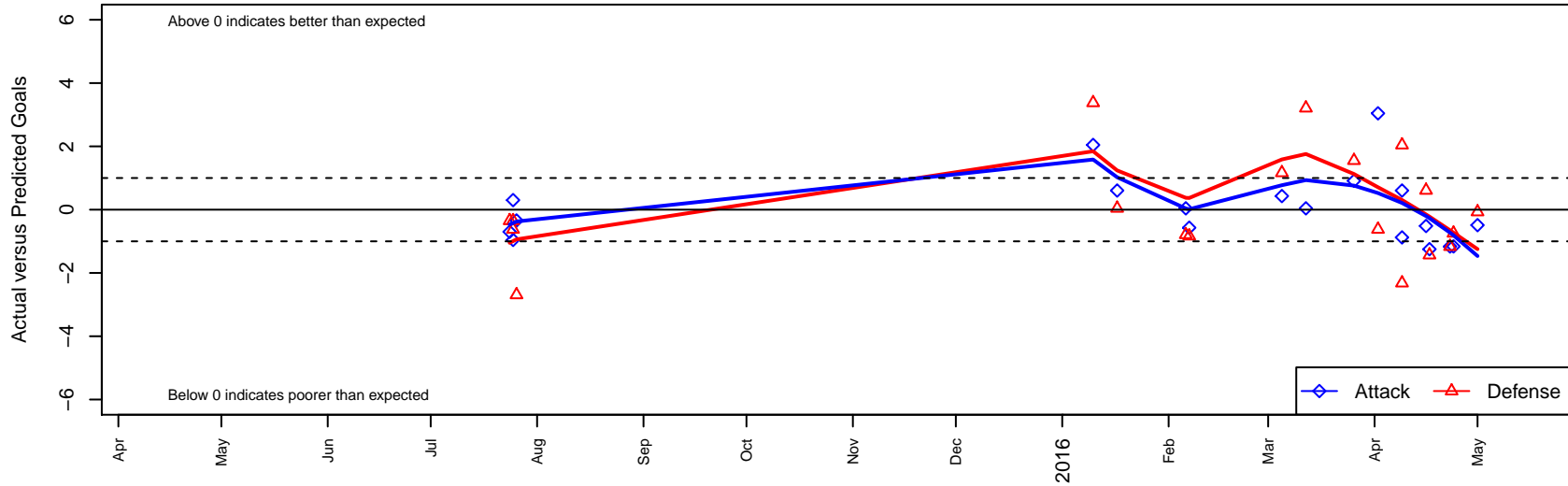
Spokane Foxes Platinum G99

Spokane Foxes FC
 Spokane, WA
 G99 total strength=1071
 attack=3.62 defense=1.81
 fall league = PSPL Classic 1 U16
 spr league = Spr PSPL–Inland U16
 notes= Brown 2013

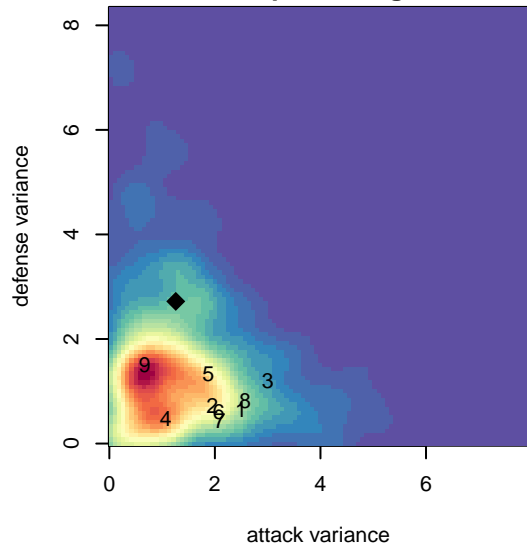
alt names used:
 FOXES FC PLATINUM G99 (WA)
 Spokane Foxes Premier 2
 Spokane Foxes Platinum 99'

Venues played:
 2015 River City Cup U15–16 U16
 2015 PSPL Classic 1 U16
 2015 Spr PSPL–Inland U16

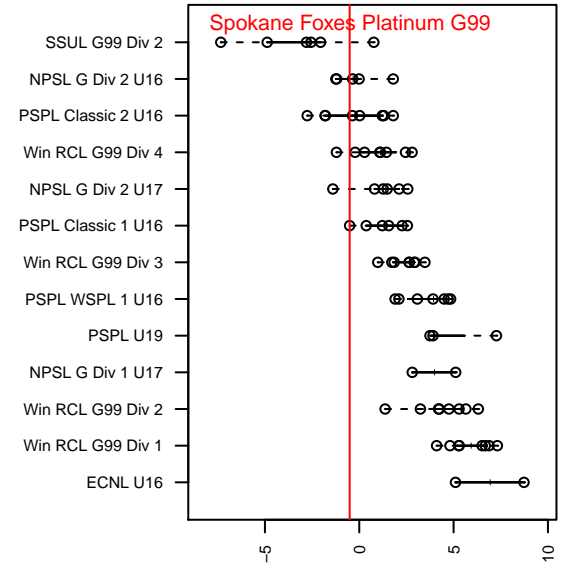
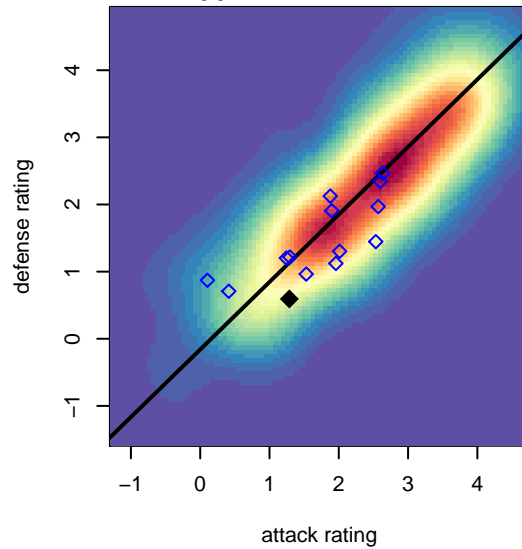
Spokane Foxes Platinum G99
 Dots are actual minus expected GF (blue circles) and GA (red triangles).
 Blue line is smoothed change in attack strength. Red is smoothed change in defense strength.



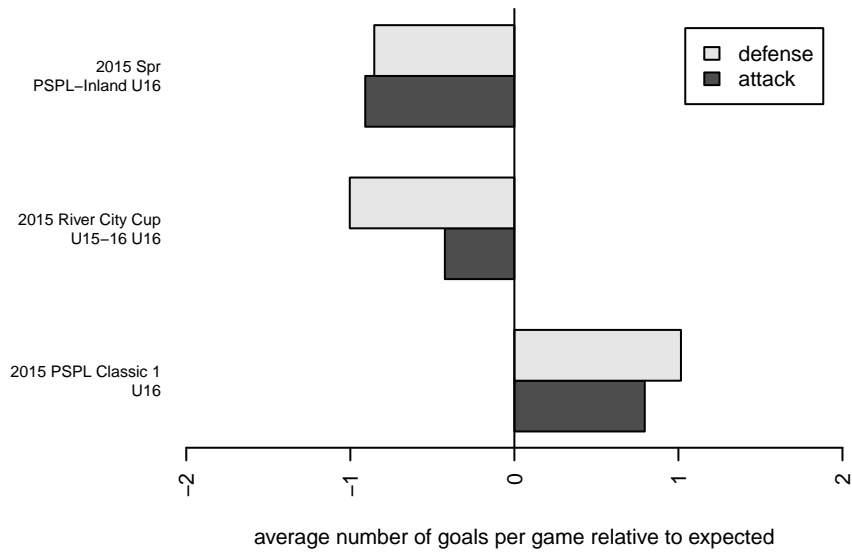
**attack and defense variance (black dot)
relative to other teams
and top 10 in region**



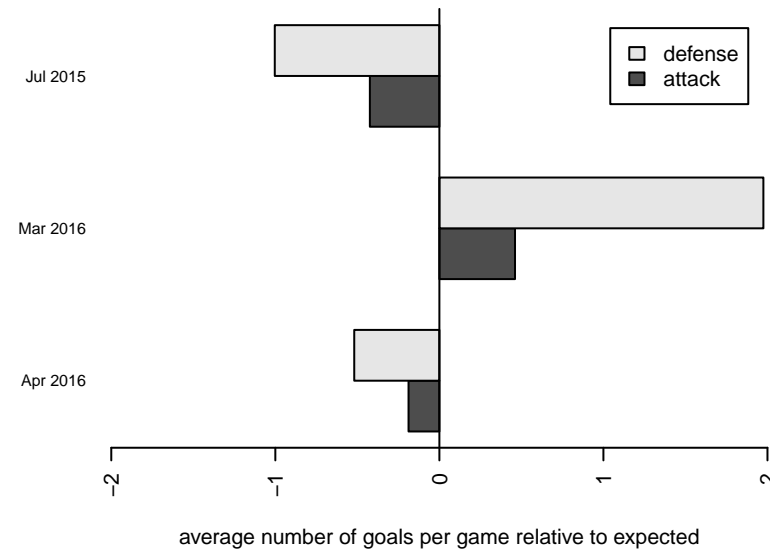
**attack and defense rating
relative to others at age
and all opponents in last 13 months**



Performance relative to 13 month average



Performance relative to 13 month average



| date | home | | away | | venue | pred.home | pred.away |
|-------------|-----------------------------------|----|------------------------------------|---|--------------------------------|------------------|------------------|
| 2016-05-01 | Spokane Foxes Platinum G99 | 0 | SSC Shadow United Douglas G99 | 8 | 2015 Spr PSPL-Inland U16 | 0.49 | 7.93 |
| 2016-04-24 | SSC Shadow Elite Dobson G99 | 2 | Spokane Foxes Platinum G99 | 0 | 2015 Spr PSPL-Inland U16 | 1.26 | 1.16 |
| 2016-04-23 | Spokane Foxes Platinum G99 | 0 | Spokane Scotties VanGrimbergen G99 | 3 | 2015 Spr PSPL-Inland U16 | 1.16 | 1.83 |
| 2016-04-17 | FC Spokane Grey G99 | 2 | Spokane Foxes Platinum G99 | 1 | 2015 Spr PSPL-Inland U16 | 0.57 | 2.25 |
| 2016-04-16 | CDA Sting -Unk G99 | 6 | Spokane Foxes Platinum G99 | 0 | 2015 Spr PSPL-Inland U16 | 6.61 | 0.52 |
| 2016-04-09 | ASE Royal Ambush G99 | 2 | Spokane Foxes Platinum G99 | 1 | 2015 PSPL Classic 1 U16 | 4.04 | 0.40 |
| 2016-04-09 | SSC Shadow Elite Bellefeuille G99 | 9 | Spokane Foxes Platinum G99 | 0 | 2015 Spr PSPL-Inland U16 | 6.68 | 0.88 |
| 2016-04-02 | Spokane Foxes Platinum G99 | 4 | FC Spokane Black G99 | 5 | 2015 PSPL Classic 1 U16 | 0.96 | 4.38 |
| 2016-03-26 | Spokane Foxes Platinum G99 | 2 | ISC Gunners B G99 | 2 | 2015 PSPL Classic 1 U16 | 1.09 | 3.55 |
| 2016-03-12 | Spokane Foxes Platinum G99 | 1 | FC Edmonds Fusion G99 | 1 | 2015 PSPL Classic 1 U16 | 0.96 | 4.21 |
| 2016-03-05 | Spokane Foxes Platinum G99 | 1 | Highline Premier Blue G99 | 3 | 2015 PSPL Classic 1 U16 | 0.57 | 4.17 |
| 2016-02-07 | Highline Premier Blue G99 | 5 | Spokane Foxes Platinum G99 | 0 | 2015 PSPL Classic 1 U16 | 4.17 | 0.57 |
| 2016-02-06 | FC Edmonds Fusion G99 | 5 | Spokane Foxes Platinum G99 | 1 | 2015 PSPL Classic 1 U16 | 4.21 | 0.96 |
| 2016-01-17 | Spokane Foxes Platinum G99 | 1 | ASE Royal Ambush G99 | 4 | 2015 PSPL Classic 1 U16 | 0.40 | 4.04 |
| 2016-01-10 | FC Spokane Black G99 | 1 | Spokane Foxes Platinum G99 | 3 | 2015 PSPL Classic 1 U16 | 4.38 | 0.96 |
| 2015-07-26 | Lethbridge FC 2000G | 10 | Spokane Foxes Platinum G99 | 0 | 2015 River City Cup U15-16 U16 | 7.31 | 0.34 |
| 2015-07-25 | FC Spokane Black G99 | 5 | Spokane Foxes Platinum G99 | 0 | 2015 River City Cup U15-16 U16 | 4.38 | 0.96 |
| 2015-07-25 | FC Spokane Grey G00 | 1 | Spokane Foxes Platinum G99 | 2 | 2015 River City Cup U15-16 U16 | 0.65 | 1.70 |
| 2015-07-24 | FC Spokane Grey G00 | 1 | Spokane Foxes Platinum G99 | 1 | 2015 River City Cup U15-16 U16 | 0.65 | 1.70 |